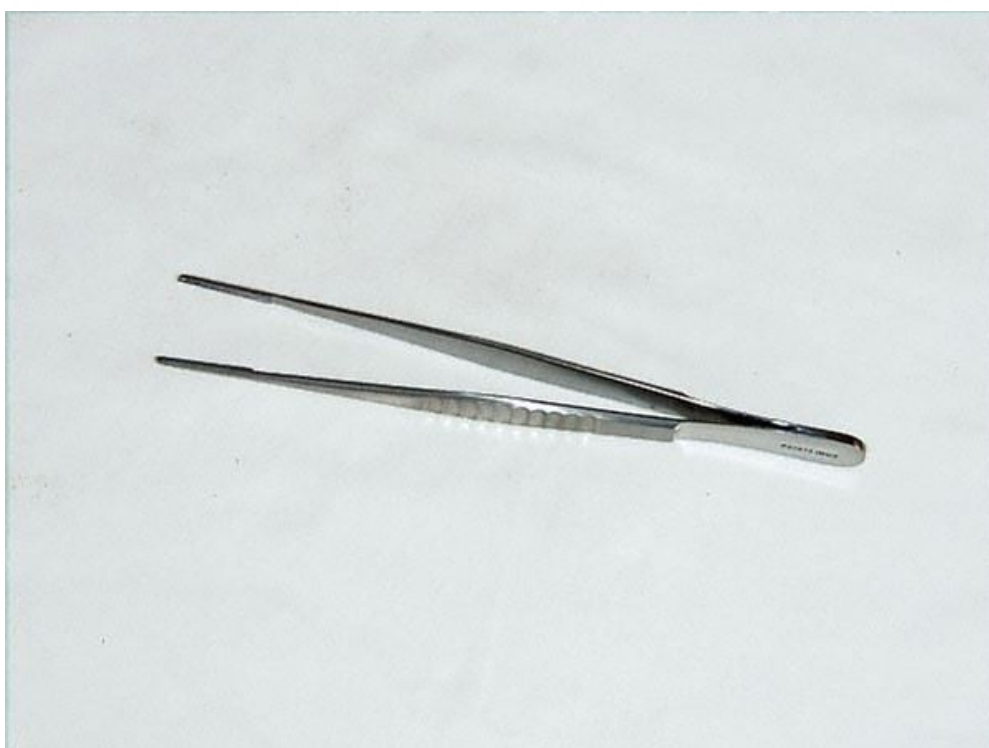


## DEBAKEY FORCEPS 1,5 MM X 15 CM ATRAUMATIC JAWS

Réf. IP27015



# DEBAKEY FORCEPS 1,5 MM X 15 CM ATRAUMATIC JAWS



Réf. IP27015

Holtex instruments are all made of top-quality stainless steel (AISI 304, 410, 420 and 420A, depending on the type of instrument) to guarantee good durability and resistance to corrosion.  
The steels come into contact with human tissues and must therefore comply with international standards and regulations in force.  
Holtex guarantees that its medical devices comply with the 2017/745 EU regulation and ISO 13485.  
100% IN-STORE reference: this reference of service instrumentation is guaranteed to be available immediately.

FEATURES			
Medical device	Yes	Classe Ir	
Marquage	CE	Barcode	3661040024356
Guarantee (month):	24	Customs Code	90189090
Sterile	No		
INFORMATIONS	Main unit	Packaged unit	
Width (cm) :		Width packaging (cm):	18,0
Length (cm) :	15,0	Length packaging (cm) :	6,0
Height (cm) :		Height packaging (cm) :	
Weight (kg) :	0,029	Weight packaging (kg) :	0,050
SPECIFIC STORAGE CONDITION			
Temperature min	(N/A)	Temperature max	(N/A)
Humidity min	(N/A)	Humidity max	(N/A)



30/03/2022 17:13 - This article is available on our website : [www.gsh-med.fr](http://www.gsh-med.fr) with the following reference IP27015

All characteristics are given for information only and may be changed