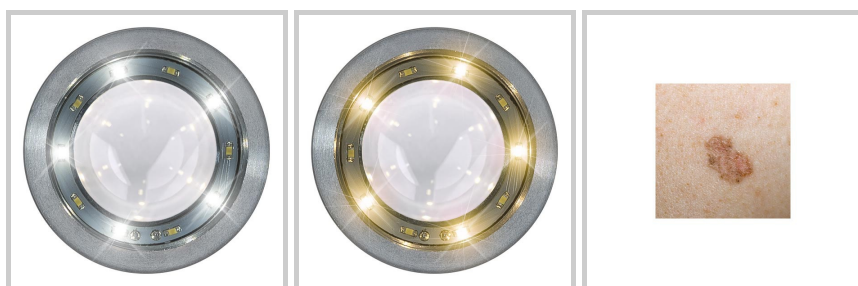


LUXASCOPE DERMATOSCOPE CCT LED 2.5 V - CONTACT PLATE WITH SCALE - LUXAMED ®

LUXAMED®

Ref. C1.716.114



01/06/2025 21:02:08 - For information purposes only, can be subject to change

GSH | 30 rue Jean de Guiramand
13290 Aix-en-Provence | France
www.gsh-med.fr

+33(0)4 42 90 31 31
info@gsh-med.fr

LUXASCOPE DERMATOSCOPE CCT LED 2.5 V - CONTACT PLATE WITH SCALE - LUXAMED ®

LUXAMED®

Ref. C1.716.114

Innovative pocket-sized dermatoscope with CCT LED technology: choice of warm white or cool white light.

WITH graduated contact plate

Description

- Lighting: LED ring with 2X5 LEDs (concentric), no fibre optics, field of vision is not limited.
- Long press on the switch to change from warm white to cool white
- Removable contact plate for easy cleaning
- Maintenance-free, as no bulb change is required.
- Continuous zoom with X10 magnification for a distortion-free image
- Optimised head design
- Automatic switch-off after 3 minutes
- LED life: approx. 100,000 hours at constant current
- Illuminance: approx. 10,000 Lux
- Colour temperature: ring 1: approx. 3000 K, ring 2: approx. 6000 K
- Handle made of two materials: aluminium and reinforced fibreglass, compatible with the head of the Luxascope Auris CCT LED otoscope
- ON/OFF push-button switch
- Power supply: 2x AAA alkaline batteries, included

Available in :


- Black : C1.716.114
- White: C1.716.914


Features

CE Marking	NONE	Medical device	No
Bar code	04260381963622	HS Code	90189084
Warranty (months)	24	Country	Germany

Information for informational purposes only, can be subject to change

DIMENSIONS AND WEIGHT

GSH | 30 rue Jean de Guiramand
13290 Aix-en-Provence | France
 www.gsh-med.fr

 +33(0)4 42 90 31 31
 info@gsh-med.fr

OTHER FEATURES

