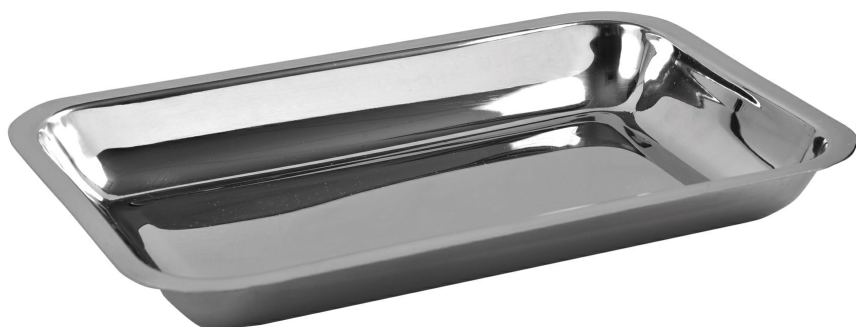


## S/S TRAY 22 X 15 X 3 CM

Ref. AI22142



30/07/2025 09:05:32 - For information purposes only, can be subject to change

GSH | 30 rue Jean de Guiramand  
13290 Aix-en-Provence | France

[www.gsh-med.fr](http://www.gsh-med.fr)

+33(0)4 42 90 31 31

[info@gsh-med.fr](mailto:info@gsh-med.fr)

## S/S TRAY 22 X 15 X 3 CM



Ref. AI22142

Ideal for storing small surgical instruments

### Description

Holtex instruments are all made of premium stainless steel (AISI 304, 410, 420 and 420A, depending on the type of instrument) to ensure good durability and corrosion resistance.

The steels come into contact with human tissues, so they must comply with international standards and regulations.

Holtex guarantees you medical devices that comply with Directive 93/42/EC and ISO 13485 (2016).

- In the "ATTACHED DOCUMENTS" tab, you can download the "Cleaning and sterilization" manual

- Reference 100% IN-STORE: this service instrumentation reference is guaranteed to be available immediately.

### Features

CE Marking	CE	Medical device	Class I
Bar code	3661040019536	HS Code	90189084
Warranty (months)	12	Country	Pakistan
DIMENSIONS AND WEIGHT			
Packed unit / Width (cm)	17	Bare Unit / Width (cm)	15
Packed unit / Height (cm)	9	Bare Unit / Height (cm)	3
Packed unit / Length (cm)	24	Bare Unit / Length (cm)	22
Packed unit / Weight	0.204	Bare Unit / Weight (kg)	0.204
SPECIFIC STORAGE CONDITIONS			
Minimum temperature	NA	Max temperature	NA
Minimum humidity	NA	Maximum humidity	NA
OTHER FEATURES			
Packed unit / Quantity	1		

30/07/2025 09:05:32 - For information purposes only, can be subject to change

GSH | 30 rue Jean de Guiramand  
13290 Aix-en-Provence | France  
[www.gsh-med.fr](http://www.gsh-med.fr)

+33(0)4 42 90 31 31  
[info@gsh-med.fr](mailto:info@gsh-med.fr)