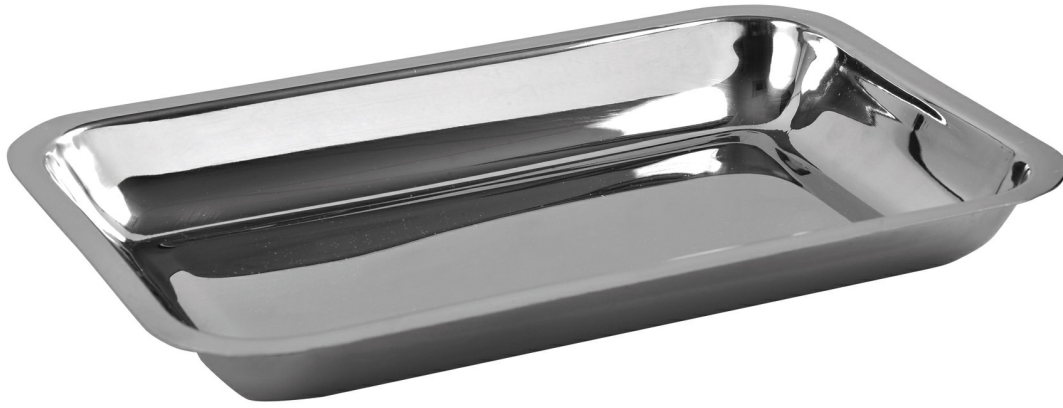


S/S TRAY 35 X 26 X 4 CM

Ref. AI37252



06/04/2026 20:50:05 – For information purposes only, can be subject to change

S/S TRAY 35 X 26 X 4 CM

Ref. [AI37252](#)



Ideal for storing small surgical instruments

Description

Holtex instruments are all made of premium stainless steel (AISI 304, 410, 420 and 420A, depending on the type of instrument) to ensure good durability and corrosion resistance.

The steels come into contact with human tissues, so they must comply with international standards and regulations. Holtex guarantees you medical devices that comply with Directive 93/42/EC and ISO 13485 (2016).

- In the "ATTACHED DOCUMENTS" tab, you can download the "Cleaning and sterilization" manual

- Reference 100% IN-STORE: this service instrumentation reference is guaranteed to be available immediately.

Features

CE Marking	CE	Medical device	Class I
Bar code	3661040019673	HS Code	90189084
Warranty (months)	12	Country	Pakistan

DIMENSIONS AND WEIGHT

Packed unit / Width (cm)	28	Bare Unit / Width (cm)	26
Packed unit / Height (cm)	7	Bare Unit / Height (cm)	4
Packed unit / Length (cm)	38	Bare Unit / Length (cm)	35
Packed unit / Weight	0.65	Bare Unit / Weight (kg)	0.622

SPECIFIC STORAGE CONDITIONS

Minimum temperature	NA	Max temperature	NA
Minimum humidity	NA	Maximum humidity	NA

OTHER FEATURES

Packed unit / Quantity	1
------------------------	---

📅 06/04/2026 20:50:05 – For information purposes only, can be subject to change