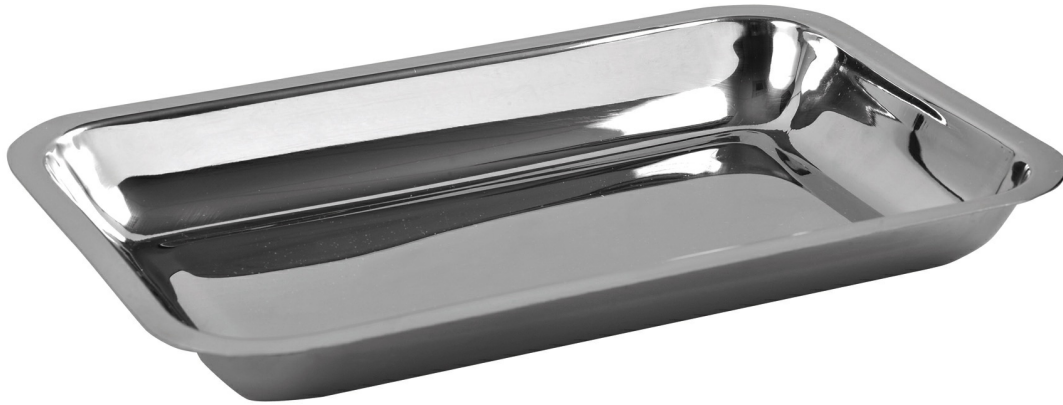


S/S TRAY 22 X 15 X 3 CM

Ref. AI22142



07/04/2026 00:14:10 – For information purposes only, can be subject to change

S/S TRAY 22 X 15 X 3 CM

Ref. [AI22142](#)



Ideal for storing small surgical instruments

Description

Holtex instruments are all made of premium stainless steel (AISI 304, 410, 420 and 420A, depending on the type of instrument) to ensure good durability and corrosion resistance.

The steels come into contact with human tissues, so they must comply with international standards and regulations. Holtex guarantees you medical devices that comply with Directive 93/42/EC and ISO 13485 (2016).

- In the "ATTACHED DOCUMENTS" tab, you can download the "Cleaning and sterilization" manual

- Reference 100% IN-STORE: this service instrumentation reference is guaranteed to be available immediately.

Features

| | | | |
|-------------------|---------------|----------------|----------|
| CE Marking | CE | Medical device | Class I |
| Bar code | 3661040019536 | HS Code | 90189084 |
| Warranty (months) | 12 | Country | Pakistan |

DIMENSIONS AND WEIGHT

| | | | |
|---------------------------|-------|-------------------------|-------|
| Packed unit / Width (cm) | 17 | Bare Unit / Width (cm) | 15 |
| Packed unit / Height (cm) | 9 | Bare Unit / Height (cm) | 3 |
| Packed unit / Length (cm) | 24 | Bare Unit / Length (cm) | 22 |
| Packed unit / Weight | 0.204 | Bare Unit / Weight (kg) | 0.204 |

SPECIFIC STORAGE CONDITIONS

| | | | |
|---------------------|----|------------------|----|
| Minimum temperature | NA | Max temperature | NA |
| Minimum humidity | NA | Maximum humidity | NA |

OTHER FEATURES

| | |
|------------------------|---|
| Packed unit / Quantity | 1 |
|------------------------|---|

📅 07/04/2026 00:14:10 – For information purposes only, can be subject to change