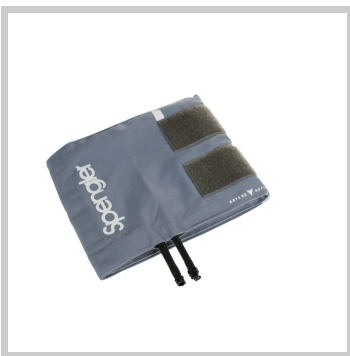


**Ref. 332001**



CE



12/04/2026 20:23:35 – For information purposes only, can be subject to change

---

**Ref. 332001**


## Description

Cotton cuff with highly resistant rubber bladder.  
 Twin 7,5 cm tubing fitted with quick CPC coupling. Legal markings printed.  
 Washable at 30-40°C.

## Features

CE Marking	CE	Medical device	Class I
Bar code	3700446028466	HS Code	9018901000
Warranty (months)	6	Country	Indonesia

### DIMENSIONS AND WEIGHT

Packed unit / Width (cm)	7	Packed unit / Height (cm)	nc
Packed unit / Length (cm)	14	Packed unit / Weight	0.31

### SPECIFIC STORAGE CONDITIONS

Minimum temperature	NA	Max temperature	NA
Minimum humidity	NA	Maximum humidity	NA

### OTHER FEATURES

Packed unit / Quantity	1
------------------------	---

 12/04/2026 20:23:35 – For information purposes only, can be subject to change